

The Efficiency and Specificity of Matrix Gel Method from the Forensic Point of View, in Determination of ABO Blood Grouping and Rhesus Factor

Harel VS*, Pawar SG, Mahajan KD, Palaskar SG, More BP and Kulkarni KV

Directorate of Forensic Science Laboratories Mumbai, Maharashtra, India

*Corresponding author: Harel VS, Directorate of Forensic Science Laboratories Mumbai, Maharashtra, India, Tel: 8369095511, E-mail: sunjm.whuh@gmail.com

Citation: Harel VS, Pawar SG, Mahajan KD, Palaskar SG, More BP, et al. (2019) The Efficiency and Specificity of Matrix Gel Method from the Forensic Point of View, in Determination of ABO Blood Grouping and Rhesus Factor. J Forensic Sci Criminol 7(1): 102

Received Date: August 1, 2018 **Accepted Date:** April 22, 2019 **Published Date:** April 24, 2019

Abstract

In today's crime investigation world determination of ABO blood grouping is still a very vital and effective process in the field of forensic crime scenes. This investigation involves the identification of blood group, on the clothes (Accuse, Victim, injured, Complainer) collected from the scene of crime, and its cross comparison with the blood sample sent by medical officer. Hence for this purpose total of 200 cases were included in the study having the samples of blood of accuse, victim, injured, complainer consisting of male and female... The determination of ABO/Rh factor was performed by conventional tube method and matrix gel card. The comparison of both techniques shows a very comparative result. As the red blood cells are sensitized with antibody will get agglutinate in the presence of anti human reagent in the matrix gel card and this will be trapped in the gel column this helps for easy analysis of blood group. However spin tube method is an operator-dependent assay, and is more susceptible to handling errors, the results are not more objective. The matrix gel card method requires Small sample volumes, and gives standardized performance with technical ease, and is with ready automation, and increased biosafety; all these factors have made this technology advantageous. In both techniques the reaction strength for ABO grouping and Rh factor is mainly govern by agglutination reaction intensity between red blood cells and anti-human reagent.

Keywords: Forensic serology; Blood group; Conventional tube technique; Haematology; Matrix gel card

Introduction

Blood grouping technique is widely used in forensic laboratories for investigation of biological fluids collected from crime scenes. In 1900, Sir Karl Landsteiner discovered the blood grouping technique known as the "ABO" system for which he was awarded with Nobel Prize in 1930 [1]. Edmond Locard a pioneer of forensic science proposed that every criminal carries some trace of evidence with him or her from the scene of crime by which he or she can be linked with the crime. The strongest evidence from the crime scene available is blood or blood stains because the source of blood and their stains help in solving the crime of violence, sexual offences, vehicular accident cases or murder. In cases of natural disasters the prime identification of body part is ABO blood grouping then later comes DNA matching. This is the most commonly followed techniques in today's forensic laboratory analysis [2,3].

The identification of biological fluids and the comparison of individual characteristics of biological evidence with known standards of its class, the biological samples can be identified. It is vital scientific evidence as it forms an important link in chain of evidence or supports circumstantial evidence. A careful investigation of blood group from the blood samples and blood stain is therefore important. Investigation of blood and blood stain gives very insight information about accused or victim which is useful in the court of law with a varying degree of reliability [4].

The presence of ABO blood group and Rhesus factor is applied to inherited antigens detected on red blood cells by specific antibodies [5,6]. Once the blood group and the Rh typing are established it remains unchanged throughout life [7,8]. The antigenic determinants on the surfaces of red blood cells are the A, B, and O blood group proteins, which are for convenience called A, B, and O antigens. Matrix gel is technique of blood group cross matching. The matrix gel card technique is introduced by Lapiere, using the sephadex gel containing within micro-tube. (Lapiere 1988; Letich *et.al.* 1993). [9-11].

The aim of this study is to determine ABO blood group from the blood samples collected as exhibits from the crime scene and the methods used are spin tube method and matrix gel System. The comparative study for these two method was carried out by testing total 200 samples of blood in the form of clothes or different types of exhibits which having blood stains.

This study is carried out for the comparative study between spin tube method and matrix gel card method for blood group identification on the basis of efficacy sensitivity and specificity [12-14].

Material and Method

Chemicals and reagents

1. The Matrix AHG (Coombs) test card:- Matrix forward and reverse grouping card with auto control has six micro-tubes prefilled with auto control a gel in a suitable buffer. The first three micro-tubes contains Monoclonal Anti-A, Anti-B and Anti-D. The fourth, fifth and six number Micro-tubes has neutral gel. The fourth tube is used as negative control. The fifth and sixth are used for reverse grouping.
2. Red Blood cells:- The Fresh blood samples of "A, B and O" blood group were kindly procured by blood bank of J.J. group of Hospitals, Mumbai, Maharashtra, India. Matrix card reader (Matrix Auto Max-80)
3. Matrix Diluent- LISS:- for three preparation of fresh cells.
4. Gel card centrifuge (Imperial Biotech LLP, Tulip gel card centrifuge)
5. Micropipette

Methodology

In the conventional spin tube method the ABO forward grouping is determined in the presence of the blood group antigens A, B and O by testing the RBC's with known antisera, specifically Anti-A, and Anti-B. On the other hand, the ABO reverse grouping method results into the presence of the expected ABO blood group antibodies by testing the serum or plasma with known A1 and B red blood cells. In case of matrix gel test the ABO forward grouping were performed in the Anti-A, Anti-B, micro-tubes, which contain the specific antibody incorporated into the gel.

Conventional method of ABO grouping

ABO blood group can be determined from the fresh blood samples by detection of antigens on RBC'S (forward method) or detection of antibodies in serum (reverse method). The blood samples are received in sterile bulb by forensic laboratories from the medical officers. The testing sample is taken into the tube and saline 0.2%, was added to the sample. This mixture was then centrifuged at about 3000 rpm for five minutes. The supernatant was then discarded and the suspended cells were rewashed with saline for two times. Resuspend the button of cells in fresh normal saline. After this the cell suspension was prepared in 2% saline.

Forward method

In the tile with two cavities added one drop of anti-A serum and anti-B serum in the above marked cavities A and B respectively. Added one drop of about 2% cell suspension in each cavity and mixed the contents thoroughly. The tile was rotated for 5 minutes and results were examined macroscopically as well as microscopically for agglutination.

Reverse Method

Removed the serum carefully. Marked the cavities of tile as A and B. Added one drop of serum in each cavity. Added one drop of 2% cell suspension of A and B cells in the respective cavities and rotated the tile for 5 minutes results are examined macroscopically as well as microscopically for agglutination.

Matrix gel card Method

In this method ABO reverse grouping was performed in the buffer gel micro-tubes. Formation of agglutination indicates the presence of an antigen-antibody reaction, while lack of agglutination indicates the absence of an antigen-antibody reaction. Agglutinated red blood cells are trapped in the gel at various levels within the micro-tube depending on the size of the agglutinates. Free non agglutinated red cells pass through the gel and form a button of red blood cells on the bottom of the micro-tube. The control micro-tube must be negative for the results to be valid. In the gel test, the reagent red blood cells are combined with sample serum/plasma in the upper reaction chamber of the micro-tube of card. Following an incubation period to enhance antigen/antibody interaction, the sensitized red blood cells react with the antibodies incorporated in the gel of the micro-tube during a centrifugation step. Agglutination indicates the presence of an antigen/antibody reaction while lack of agglutination indicates the absence of an antigen/antibody reaction. Agglutinated red blood cells become trapped in the gel at various levels within the micro-tube, depending on the size of the agglutinates. Free non agglutinated red blood cells pass through the gel and form a button of red blood cells on the bottom of the micro-tube.

Sample preparation for forward grouping

Prepared 5% of blood cells suspension in matrix diluent LISS, by taking 0.5 mL LISS + 50 µL of whole blood or 25 µL of packed blood cells. Mixed gently and used for forward grouping.

Sample preparation for reverse grouping

Prepared 0.8% blood of cells suspension in matrix diluent LISS as follows: - Washed fresh A, B cells with 0.9% saline till the supernatant is clear. Add 1 mL of LISS in Each labelled test tubes as A and B. Used for reverse grouping.

Procedure

Pipetted 10 µL of 5% blood cell suspension in the microtubes 1 to 4 (A-B- -D- Control). Pipetted 50 µL of 0.8% known 'A' blood cell suspension in the microtube 5. Pipetted 50 µL of 0.8% Known 'B' blood cell suspension in the microtube 6. Pipetted 50 µL of serum of A and B in the microtubes 5 and 6. Allowed the card to incubate for 10 min.at room temperature. The card was removed and the results were recorded.

Agglutination in the forwarding grouping and either haemolysis or Agglutination in the reverse grouping were interpreted as a positive reaction. The results of ABO and Rh type of samples were recorded [15-17].

Results

The reaction strength may be recorded by grading of the Agglutination Reaction Intensities:-

The Red blood cells possessing the corresponding antigen will agglutinate in the presence of specific antibody, and will trapped in the gel column, and gets settle at the bottom of the microtube. The control microtube (Ctrl) must be negative to validate the forwarding results [8-10].

Positive Reaction:- A clear line on the surface of the gel column is formed by the agglutinated blood cells or sometimes it dispersed in the gel column [8-10].

Negative Reaction:- Non Agglutinated red blood cells settle at the bottom of micotube forming a compact button [8-10].

Strength of reaction Comments

G++++ (G4+):- Agglutinated red blood cells form a line at the top of the gel microtube.

G+++ (G3+):- Most agglutinated red blood cells remain in the upper half of the gel microtube.

G++ (G2+):- Agglutinated red blood cells are observed throughout the length of the microtube. A small button of red blood cells may also be visible at the bottom of the gel microtube.

G+ (G1+):- Most agglutinated red blood cells remain in the lower half of the microtube. A button of cells may also be visible at the bottom of the gel microtube.

G± Most agglutinated red blood cells are in the lower third part of the gel microtube.

Negative:- Negative all the red blood cells pass through and form a compact button at the bottom of the gel microtube.

Mixed field agglutination

Agglutinated red blood cells form a line at the top of the gel and non-agglutinated red blood cells form a compact button at the bottom of the gel microtube.

H:- Hemolysis of red blood cells

Out of 200 blood samples (which include Accuse, Victim, Suspect, injured, Deceased, Vitness etc.) cases, 5% (10 out of 200) shows "inconclusive or invalid" results.

Blood Group Type	A	B	AB	O
Samples with correct results	45	80	36	29

Table 1: Number of samples Showing blood group are as follows

Results for:- "A "Blood Group:-

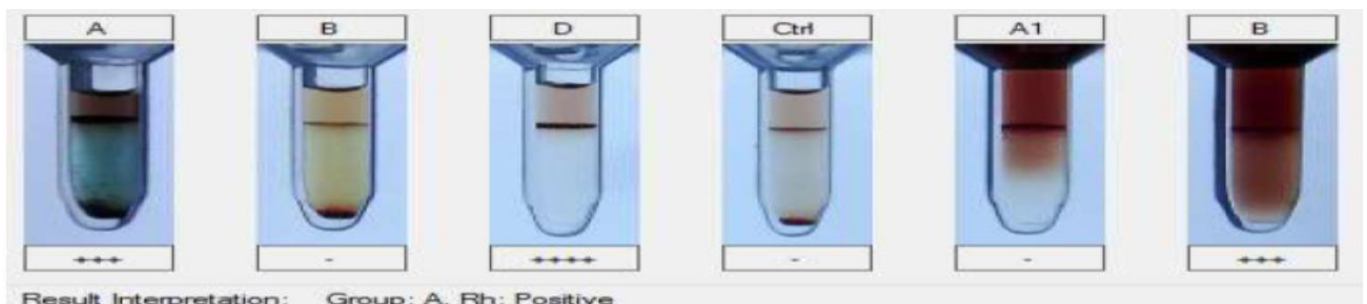


Figure 1: G (4+): Rh; G (3+): A-cells, B-Serum; Negative (-): B-cells, Ctrl, A-serum

Figure 1 shows, G (3+) agglutination reaction in forward A-cells and G (3+) agglutination reaction in reverse grouping B-serum and shows negative reaction for B-cells and A-serum. Hence the blood group is 'An' Rh+.

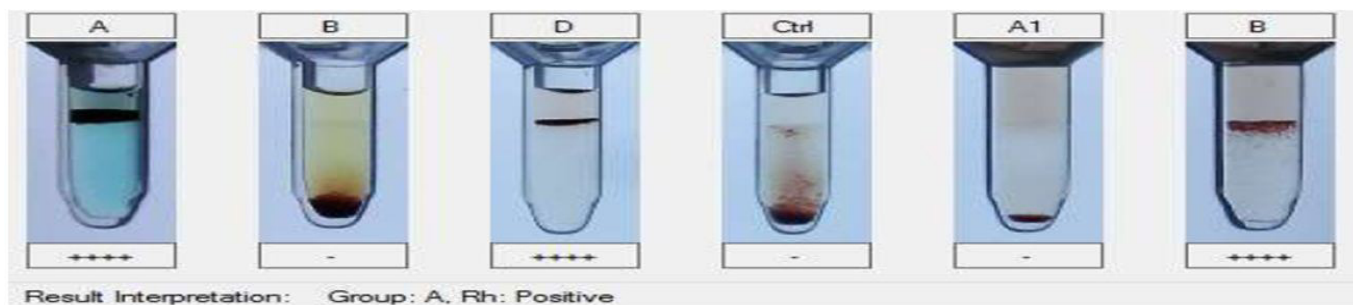


Figure 2: G (4+): A-cells, Rh, B-Serum; Negative (-): B-cells, Ctrl, A-serum

Figure 2 shows, G (4+) agglutination reaction in forward A-cells and G (4+) agglutination reaction in reverse grouping B-serum, and shows negative, reaction for B-cells and A-Serum. Hence the blood group is 'An' Rh+”

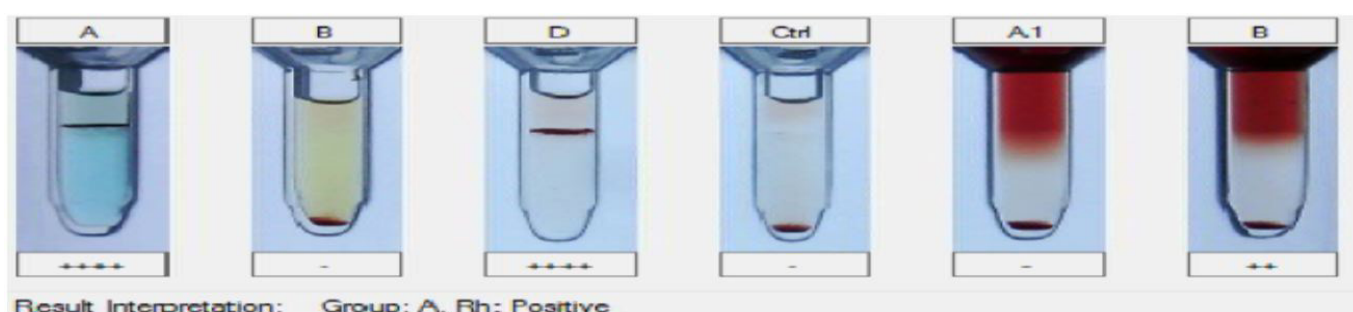


Figure 3: G (4+): A-cells, Rh; G (2+): B-Serum; Negative (-): B-cells, Ctrl, A-serum

Figure 3 shows, G (4+) agglutination reaction in forward A-cells and G (2+) agglutination reaction in reverse grouping B-serum, and shows negative, reaction for B-cells and A-Serum. Hence the blood group is 'An' Rh+”

Results for:- “B “Blood Group:-

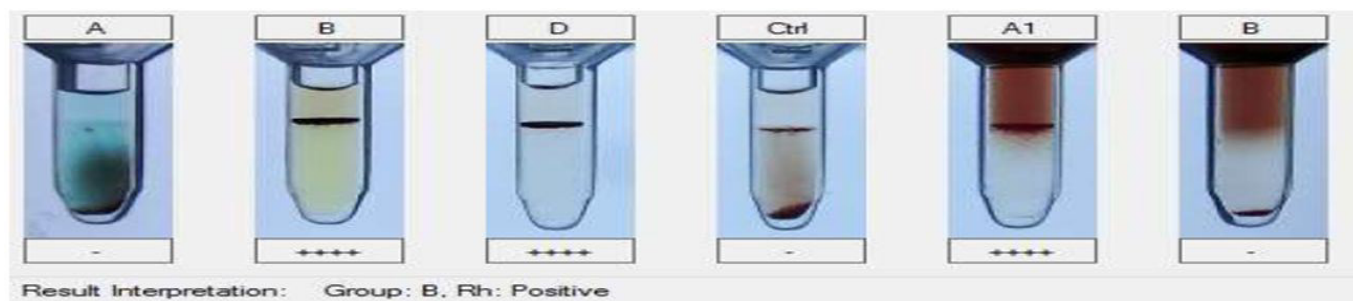


Figure 4: G (4+): B-cells, Rh, A-Serum; Negative (-): A-cells, Ctrl, B-serum

Figure 4 shows, G (4+) agglutination reaction in forward B-cells and G (4+) agglutination reaction in reverse grouping A-serum, and shows negative, reaction for A-cells and B-Serum. Hence the blood group is 'B' Rh+.

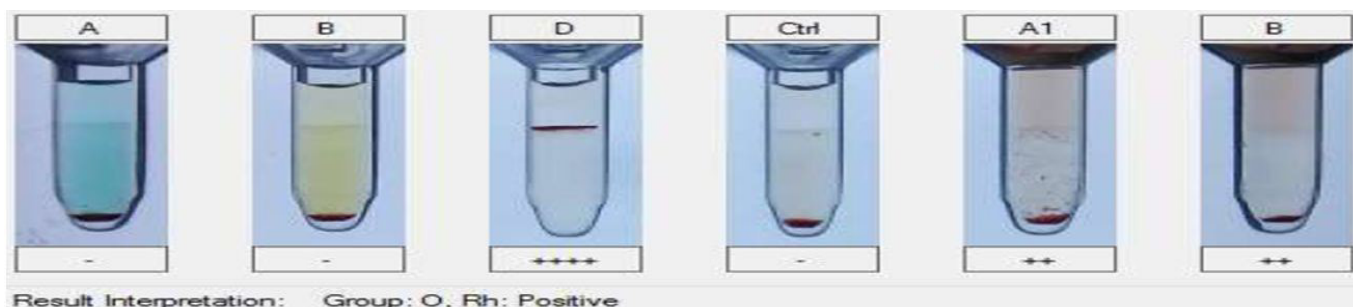


Figure 5: G (4+): B cells, Rh; G (2+): A-Serum; Negative (-): A-cells, Ctrl, B-serum

Figure 5 shows, G (4+) agglutination reaction in forward B-cells and G (2+) agglutination reaction in reverse grouping A-serum, and shows negative, reaction for A-cells and B-Serum. Hence the blood group is 'B' Rh+.

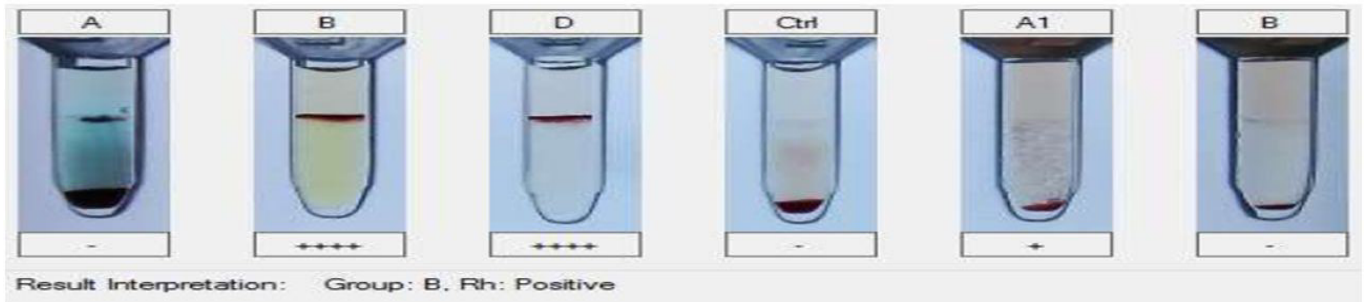


Figure 6: G (4+): B-cells, Rh; G (1+): A-Serum; Negative (-): A-cells, Ctrl, B-serum

Figure 6 shows, G(4+) agglutination reaction in forward B-cells and G (1+) agglutination reaction in reverse grouping A-serum, and shows negative, reaction for A-cells and B-Serum. Hence the blood group is 'B' Rh+.

Results for:- "AB "Blood Group:-

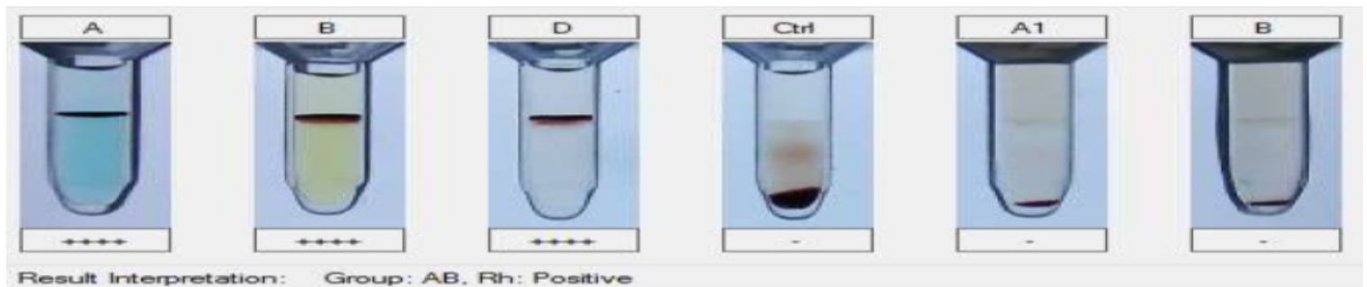


Figure 7: G (4+): A-cells, B-cells, Rh; Negative (-): A-serum, B-Serum, Ctrl

Figure 7 shows, G (4+) agglutination reaction in forward A-cells and B-cells and negative agglutination reaction in reverse grouping for A-serum and B-serum. Hence the blood group is 'AB' Rh+.

Results for:- "O "Blood Group:-

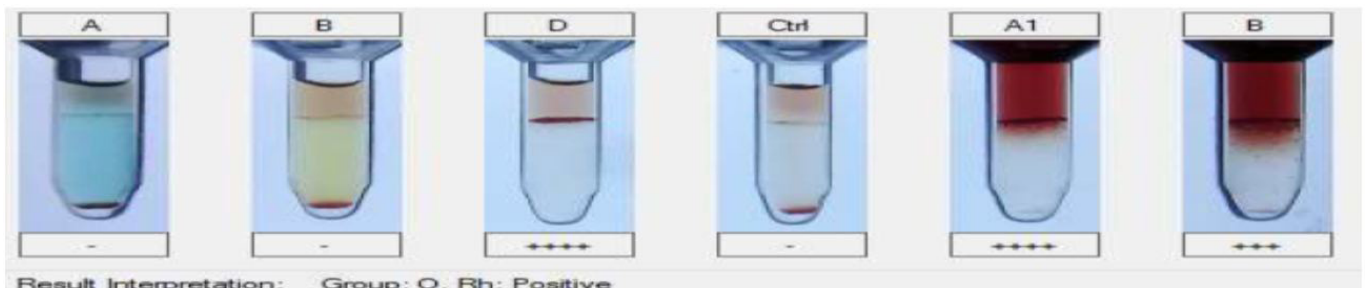


Figure 8: G (4+): Rh, A-serum; G (3+): B-Serum; Negative (-): A-cells, B-cells, Ctrl

Figure 8 shows, Negative agglutination reaction in forward A-cells and B-cells and G (4+) agglutination reaction in reverse grouping for A-serum and G (3+) agglutination reaction for B-serum. Hence the blood group is 'O' Rh+.

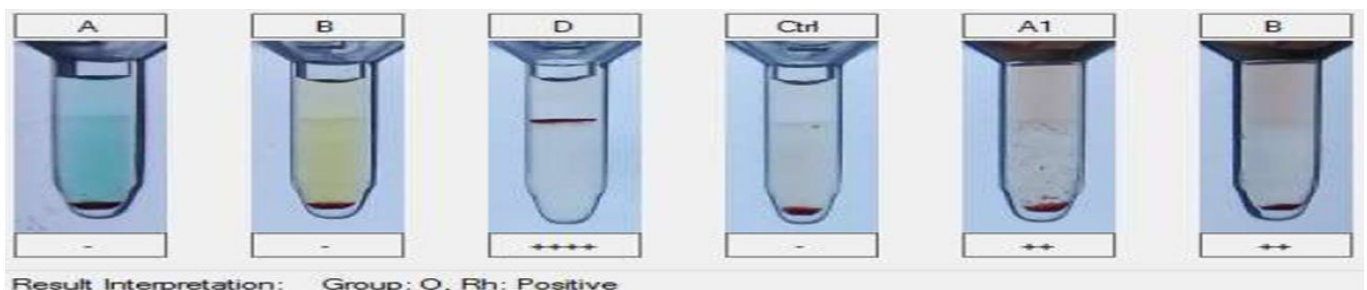


Figure 9: G (4+): Rh; G (2+): A-serum, B-Serum; Negative (-): A-cells, B-cells, Ctrl

Figure 9 shows, Negative agglutination reaction in forward A-cells and B-cells and G (2+) agglutination reaction in reverse grouping for A-serum and B-serum. Hence the blood group is 'O' Rh+.

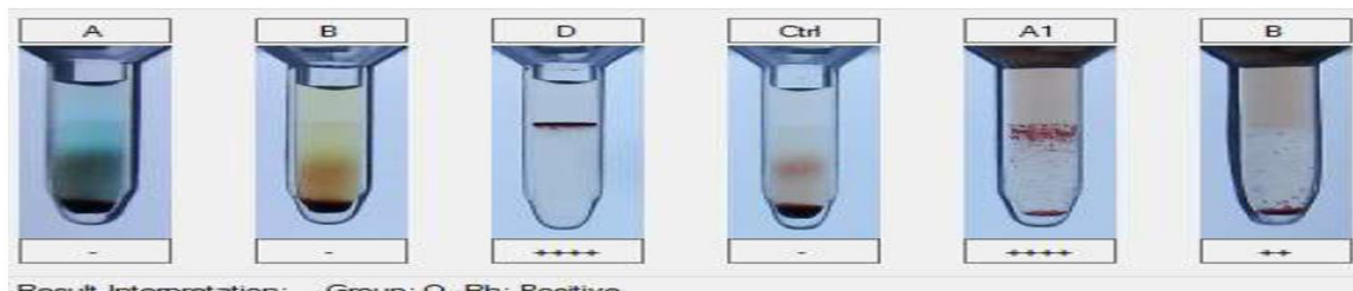


Figure 10: G (4+): Rh, A-serum; G (2+): B-Serum; Negative (-): A-cells, B-cells, Ctrl

Figure 10 shows, Negative agglutination reaction in forward A-cells and B-cells and G (4+) agglutination reaction in reverse grouping for A-serum and G (2+) agglutination reaction for B-serum. Hence the blood group is 'O' Rh+.

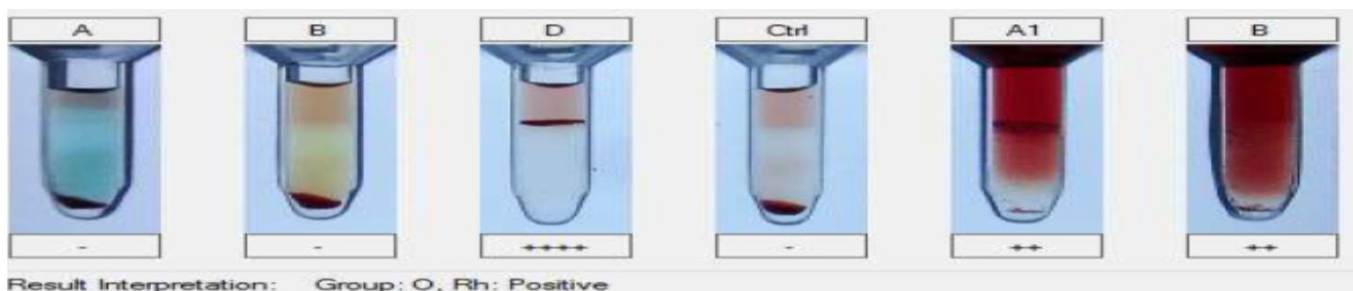


Figure 11: G (4+): Rh; G (2+): A-serum, B-Serum; Negative (-): A-cells, B-cells, Ctrl

Figure 11 shows, Negative agglutination reaction in forward A-cells and B-cells and G (2+) agglutination reaction in reverse grouping for A-serum and B-serum. Hence the blood group is 'O' Rh+.

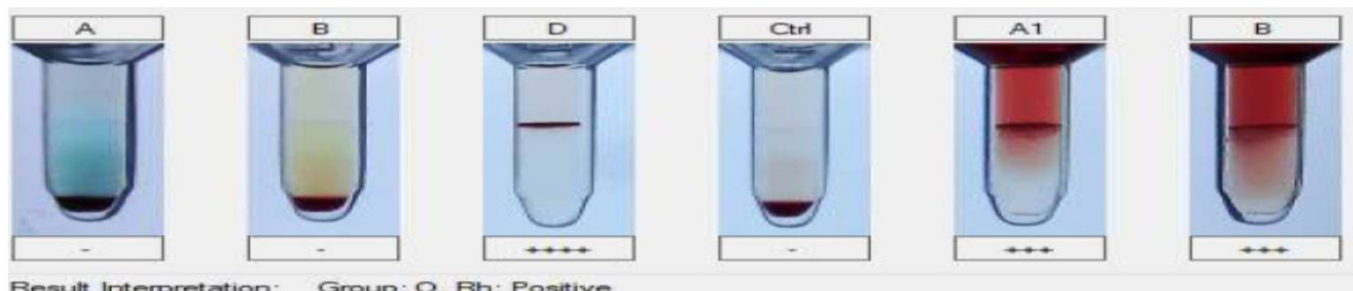


Figure 12: G (4+): Rh; G (3+): A-serum, B-Serum; Negative (-): A-cells, B-cells, Ctrl

Figure 12 shows, Negative agglutination reaction in forward A-cells and B-cells and G (3+) agglutination reaction in reverse grouping for A-serum and B-serum. Hence the blood group is 'O' Rh+.

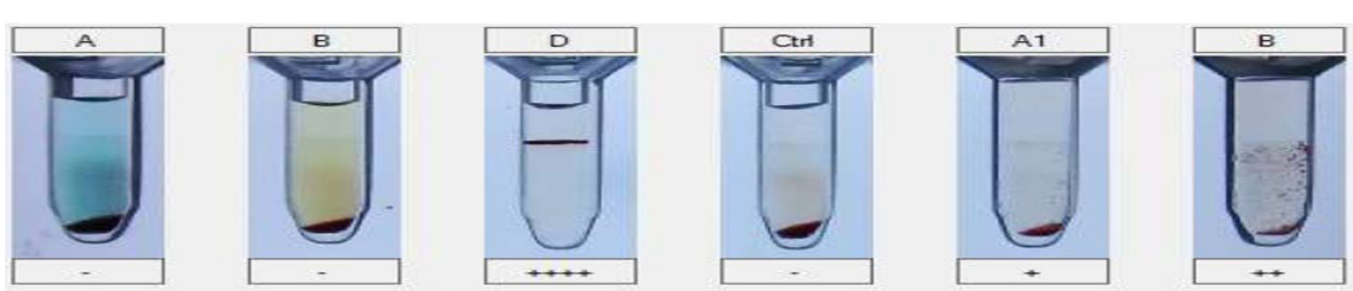


Figure 13: G (4+): Rh; G(2+): B-Serum; G(1+): A-serum; Negative(-): A-cells, B-cells, Ctrl

Figure 13 shows, Negative agglutination reaction in forward A-cells and B-cells and G (2+) agglutination reaction in reverse grouping for A-serum and G (1+) agglutination reaction for B-serum. Hence the blood group is 'O' Rh+.

Results for:- “Inconclusive “Blood Group:-

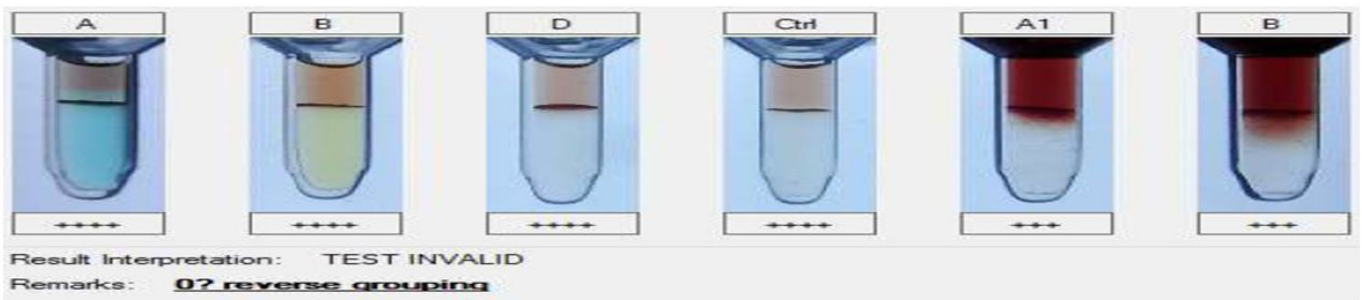


Figure 14: G (4+): A-cells, B-cells, Rh Ctrl; G (3+): A-serum, B-Serum

Figure 14 shows, G (4+) agglutination reaction in forward A-cells and B-cells and G (3+) agglutination reaction in reverse grouping for A-serum and B-serum. Hence the blood group is cannot be concluded.

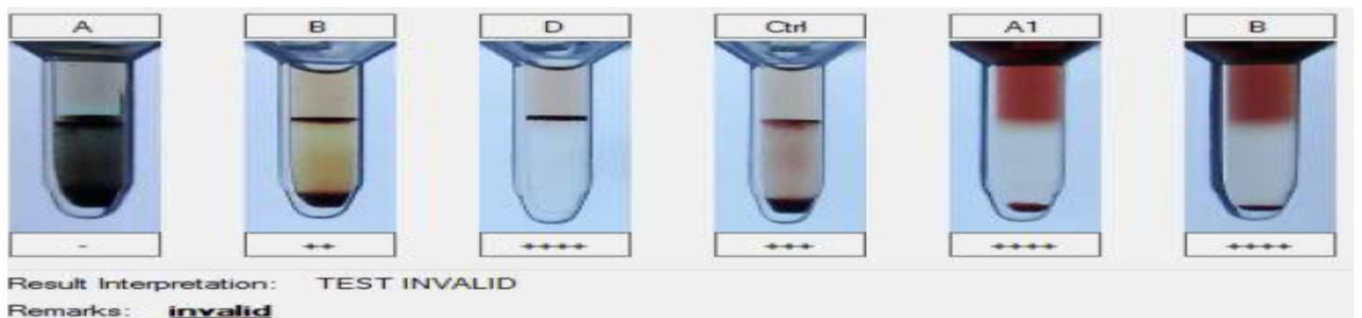


Figure 15: G (4+): Rh, A-serum, B-Serum; G (3+): Ctrl; G (2+): B-Cells; Negative(-): A-Cells

Figure 15 shows, G (2+) agglutination reaction in forward B-cells and negative agglutination reaction A-cells and G (4+) agglutination reaction in reverse grouping for A-serum and B-serum. Hence the blood group is cannot be concluded.

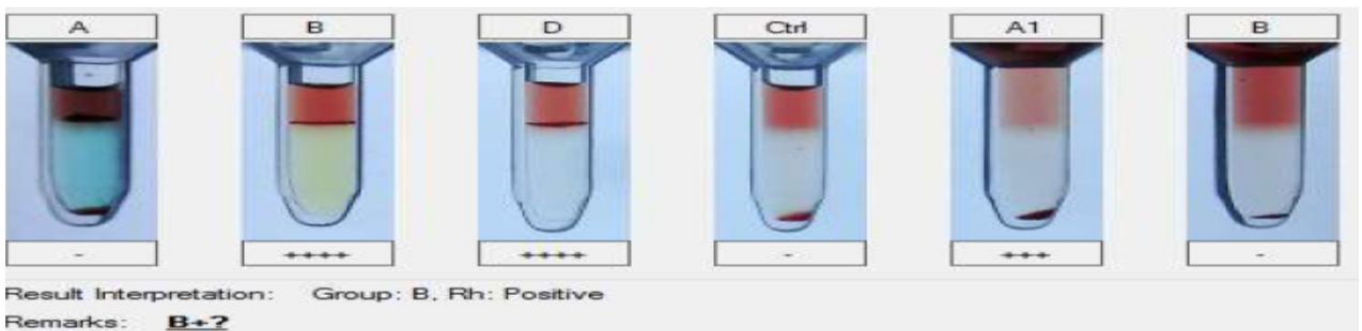


Figure 16: G (4+): B-Cells, Rh; G (3+): A Serum; Negative (-): A-Cells, Ctrl, B-serum

Figure 16 shows, G (4+) agglutination reaction in forward B-cells and negative agglutination reaction A-cells and G (3+) agglutination reaction in reverse grouping for A-serum and negative agglutination reaction for B-serum. Hence the blood group is cannot be concluded

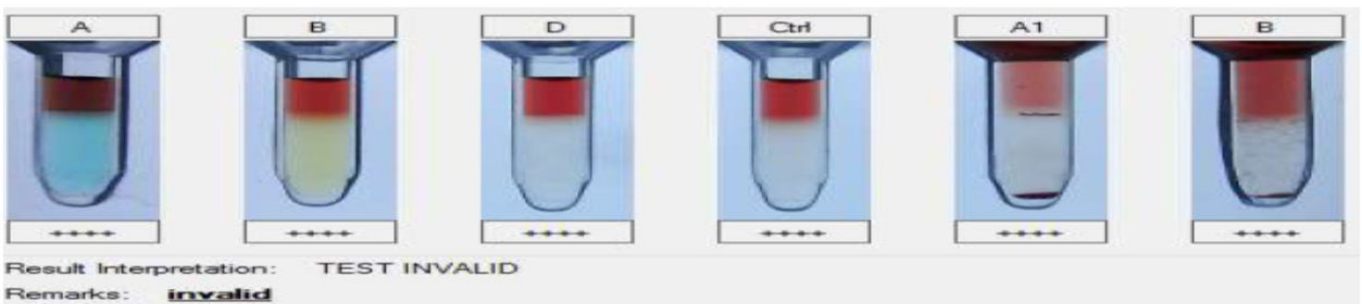


Figure 17: G (4+): A-Cells, B-Cells, Rh, Ctrl, A-serum, B-Serum

Figure 17 shows, G (4+) agglutination reaction in forward A-cells and B-cells and G (4+) agglutination reaction in reverse grouping for A-serum and B-serum. Hence the blood group is cannot be concluded

Discussion

This study presents number of advantages of blood group cross matching by using Matrix gel card method over routine spin tube method. The hemagglutination in positive wells was strong, so that they were easily seen with the naked eye.

The ideal condition for the agglutination reaction for blood group type "A" is Figure 2, for blood group type "B" is Figure 4. For blood group type "AB" is Figure 7, for blood group type "O" is Figure 12. It was observed that Figure 1 shows G (3+), reaction and Figure 3 shows G (2+) reaction, but when these samples were preprocessed, the correct reaction for reverse (Serum) grouping was some times observed difficult to conclude. Similarly the results of samples in Figure 5, Figure 6, Figure 14 shows G (2+), G (1+)... etc reaction and but when these samples were preprocessed with routine spin tube method, the very poor agglutination reaction was observed.

Figure 15, Figure 16, Figure 17, and Figure 18 shows the inconclusive or invalid results by both routine spin tube method, and Matrix gel card method.

In our study it was observed that 5% (10 samples out of 200) samples which showed invalid/ Haemolysed / Inconclusive results by our routine spin tube method, was giving correct agglutination by gel card technique. Which is coated in the studies by Kaur R, Rumsey DH, and Malyska H. *et.al?*

It was observed that Matrix gel card test is better than Spin saline tube method because of its simplicity, stability of results, better handling, long time recorded, dispensation of controls with comparable sensitivity and specificity which is follow with this study (Col *et al.*, 2008).

As the Matrix gel test uses an increased serum to cell ratio and there is no need of wash phase, thus reducing possibility of elution of weakly bound antibodies hence the false positive screens of results were reduced using the matrix gel test system. (Bromilow *et al.*, 1992).

Matrix gel card test results remain stable within the gel, allowing rereading and it can be photocopied. The disposal of plastic cards is also very easy, which increases standardisation of laboratory techniques and introduces more objective reading of agglutination reaction. (Bromilow *et al.*, 1992).

The blood group antigens for ABO and Rh factor were detected upto 12 Months. The number of non-specific anti bodies and false positive screens of results were reduced using matrix gel system.

Conclusion

From above observations it was concluded that the Matrix gel card technique is more suitable and less time consuming. The results are more stable can be recorded after long time. The test can be carried out with very small sample. In conclusion Matrix gel card test has been shown to be very efficient in forensic fields to get the blood group from the blood samples of Accuse, Victim, injured, Complainer Consisting of Male and Female.

Acknowledgment

Author thanks to Director General (Legal & Technical) Home Dept. Govt. of Maharashtra and Forensic Science Lab Laboratory, Mumbai, for the facilities to do this analysis.

References

1. Lapierre Y (1998) Proceedings of XX Congress of the International Society of Blood Transfusion Society. British Blood Transfusion Society; Manchester, UK.
2. Lapierre Y, Rigal D, Adam J, Josef D, Meyer F, et al. (1990) "The gel test: A new way to detect red cells antigen - antibody reactions." *Transfusion*. 30: 109-13.
3. Leitch K, Forrest A, Mitchell R (1993) "A preliminary trial of the gel test for blood group serology." *Br J Biomed Sci* 50: 64-6.
4. Mollison PL (1993) *Blood Transfusion in Clinical Medicine* (9th Edn) Blackwell Scientific Publications, USA.
5. Novaretti MCZ, Jeus ES (1994) Evaluation of a gel test system for the detection of transplacental haemorrhage. *Transfusion* 34: S110.
6. Kaur R, Kakkar N, Dhanoa J (2003) "Use of gel-based DiaMed-ID microtyping system for cross matching enhances sensitivity." *Indian J Pathol Microbiol* 46: 617-20.
7. Rumsey DH, Ciesielski DJ (2000) "New protocols in serological testing: A review of techniques to meet today's challenges." *Immunohematology* 16: 131-7.
8. Malyska H, Weiland D (1994) "The gel test." *Lab Med* 25: 81-5.
9. Novaretti MC, Silveira EJ, Filho EC, Dorlhac-Llacer PE, Chamone DA (2000) "Comparison of tube and gel technique for antibody identification." *Immunohematology* 16: 138-41.
10. Bromilow IM, Adams KE, Hope J, Eggington JA, Duguid JK (1991) "Evaluation of the ID gel test for antibody screening and identification." *Transfus Med* 1: 159-61.
11. Bromilow IM (1992) Gel Techniques in blood group serology. *Med Lab Sci*. 49: 129-32.
12. Cate JC 4th, Reilly N (1999) "Evaluation and implementation of the gel test for indirect antiglobulin testing in a community hospital laboratory." *Arch Pathol Lab Med* 121: 693-7.

13. Swarup D, Dhot PS, Kotwal J, Verma AK (2008) Comparative Study of Blood Cross Matching Using Conventional Tube and Gel Method. Med J Armed Forces India 64: 129-30.
14. Kaur R, Kakkar N, Dhanoa J (2003) Use of gel based DiaMed-ID microtyping system for cross matching enhanced sensitivity. Indian J Pathol Microbiol 46: 617-20.
15. Coombs RRA, Mourant AE, Race RR (1945) A new test for the detection of weak and 'incomplete' Rhagglutinins. Br J Exp Pathol 26: 255-66.
16. Coombs RR, Mourant AE, Race RR (1946) In-vivo isosensitisation of red cells in babies with haemolytic disease. Lancet 1: 264-6.
17. Jaiprakash M, Gupta PK, Kumar H (2006) Role of gel based technique for coomb's test. Indian J Pathol Microbiol 49: 370-2.

Submit your next manuscript to Annex Publishers and benefit from:

- ▶ Easy online submission process
- ▶ Rapid peer review process
- ▶ Online article availability soon after acceptance for Publication
- ▶ Open access: articles available free online
- ▶ More accessibility of the articles to the readers/researchers within the field
- ▶ Better discount on subsequent article submission

Submit your manuscript at
<http://www.annexpublishers.com/paper-submission.php>