

Tooth Coronal Pulp Index as a Tool for Age Estimation in Egyptian Population

El Morsi DA¹, Rezk HM², Aziza A³ and El-Sherbiny M⁴

¹Department of Forensic Medicine & Clinical Toxicology, Mansoura University, Egypt

²Department of Anatomy, Mansoura University, Egypt and Department of Anatomy, Batterjee Medical College (BMC), Jeddah, KSA

³Bachelor of Dental Surgery (BDS), Faculty of Oral and Dental Medicine, Mansoura University, Egypt

⁴Department of Anatomy, Mansoura University, Egypt & Department of Medicine, Almaarefa Colleges, Riyadh, KSA

*Corresponding author: El Morsi DA, Department of Forensic Medicine and Clinical Toxicology - Mansoura Faculty of Medicine, Egypt, E-Mail: dr.doaa2014@outlook.com

Citation: El Morsi DA, Rezk HM, Aziza A, El-Sherbiny M (2015) Tooth Coronal Pulp Index as a Tool for Age Estimation in Egyptian Population. J Forensic Sci Criminol 3(2): 201. doi: 10.15744/2348-9804.2.501

Received Date: March 02, 2015 **Accepted Date:** April 28, 2015 **Published Date:** April 30, 2015

Abstract

Age estimation from tooth – coronal index (TCI) using dental radiographs based on reduction in the size of the dental pulp cavity with advancing age as a result of secondary dentin deposition, has been presented. The study aimed to assess the accuracy of age estimation from TCI of mandibular premolars and molars (except wisdom teeth) of both sides using panoramic radiographs of known age and sex and to develop regression equations that can be used in the Egyptians. The study was conducted on 234 Egyptian subjects (119 males and 115 females) of known age and sex. The length of tooth crown and that of coronal pulp cavity (in mm) of 845 mandibular premolars and 835 mandibular molars were measured. Then TCI was computed for each tooth and regressed on the real age of the sample. The results reveal that the mean \pm SE age of the studied subjects is 25.52 ± 0.84 years (ranges from 8 to 74 years). There is no difference in TCI between both sexes. TCI for premolars is larger than those of molars and it is higher in males than females (27.24 ± 0.077 to 28.51 ± 0.755 in females; 27.26 ± 0.748 to 28.66 ± 0.846 in males); and (24.79 ± 0.763 to 28.44 ± 0.680 in females; 24.81 ± 0.835 to 29.45 ± 0.866 in males) respectively. Also there is highest significant correlation of the 2nd right premolar TCI with age ($p \leq 0.05$). It could be concluded that TCI method of mandibular teeth was found to be the best radiologic; rapid and non - invasive method for age estimation and the regression equations should be applied cautiously for different populations and time periods.

Keywords: Age estimation; Teeth; Tooth pulp; TCI; Dental radiograph; Identification

Introduction

In forensic science; identification of a person is a fundamental question. It is an important basis for legal and ethical issues and declaration of death reports. Also there is an increasing demand for age estimation in living persons to clarify criminal and civil liability and social issues [1,2]. One of the most reliable methods for age estimation in forensic science is based on teeth examination. Teeth are the hardest part of the body and could be preserved for a long time after death without gross changes [3-6]. Different methods for teeth examination; morphological, biochemical and histological; could be used [7-9].

However these methods are invasive and require tooth extraction [10-15]. Furthermore; non-invasive radiographic techniques have been developed for measurements of the reduction in the dental pulp cavity associated with advancing age due to secondary dentin formation [16-19].

Once tooth crown is fully formed secondary dentin begins to form. Dentin formation continues throughout life, and layers of secondary dentin (also known as regular secondary dentin) are continuously deposited by odontoblasts lining the pulp chamber [20]. Since regular secondary dentin is laid down at the pulpal end of the primary dentin, the pulp cavity decreases in size with age. If dentin is exposed to acute damage, for example dental caries, some of the underlying odontoblasts die, this irritation or response dentin is often known as irregular secondary dentin, and sometimes referred to as tertiary dentin [21,22].

Teeth consist of enamel as the outermost covering of tooth crown and dentin underneath, both of which are hard tissues resistant to decomposition, followed by pulp as the innermost soft tissue core. Likewise cementum is the outermost covering for the surface of root which is also resistant to decomposition [9,23,24]. Age estimation in children and adolescents can be performed with a standard technique given by Schour and Massler's [25]; Demirijian's method [26] and Ikeda *et al.* [27]. Gustafson's method is still in practice by the forensic odontologists in medicolegal issues, he evaluated the extent of six changes correlated teeth with increasing age. These are: the degree of attrition, the position of epithelial attachment, the amount of secondary dentine, the cemental thickness, the degree of root resorption and the transparency of root dentine; although a lot number of modifications to this method have been described [28].

These modifications were done by Kilian's method [29] which is based on the evaluation of six markers: the degree of attrition, the secondary dentin, the secondary cementum, the resorption, the transparency and the position of epithelial attachment. However, Kashyap and Koteswara [30]; modified Gustafson's criteria to make it more objective; it is based on the quantitative evaluation of four markers: the abrasion, the secondary dentin, the secondary cementum and the transparency.

Since 2004, Cameriere *et al.* [31-33] have studied method of age estimation using the pulp/tooth area ratio to quantify the apposition of secondary dentin. The method has elicited more interest than others and has been tested on different teeth. Moreover, as stated by Bashet *et al.* [16] radiographic evaluation of secondary dentin may be the only non-invasive approach to estimate age from fully developed teeth.

On the other hand Kvaal *et al.* [34] introduced a radiographic method in which tooth extraction was not required as it was done by indirectly measuring deposition of secondary dentin (by measuring pulp radiolucency) and correlated it to age. The study of Ikeda *et al.* [27] measured the tooth-coronal index (TCI) [Tooth – Crown index = Length of the coronal pulp cavity / Length of the Crown X 100] after it was computed for each tooth and regressed on real age. In 1993, Drusini [20] following Ikeda *et al.* method, soft X-ray photos were taken to measure the length (in mm) of the crown (CL) and the length of coronal pulp cavity (CPCL). Then, the coronal index was computed for each tooth and regressed to obtain equations that allow estimation of age in unknown bodies and isolated teeth [21].

Many of these studies have discussed methods based on measurements on various radiographic and morphological parameters and developed formulas on such basis [33]. However, the reproducibility of these parameters is uncertain, as the values may be different for individuals from different ethnical groups [35].

The present study aims to assess the accuracy of age estimation from tooth - coronal index (TCI) of mandibular premolars and molars (except wisdom teeth) of both sides using panoramic radiographs of known age and sex individuals and to develop regression equations that can be used in the Egyptians.

Subjects and Methods

Samples

This study was conducted on a total of 234 Egyptian subjects (119 males & 115 females) with 1680 intact teeth of known age and sex. They were subjected to panoramic radiographs after taken written informed consent. These panoramic radiographs were provided by a private radiologist (Hyperion X7, MYRAY - Imola, Italy). The panoramic radiographs were chosen because most of intraoral films were exposed to reveal pathologies such as caries and inflammatory process. But with panoramic radiographs it is possible to select teeth free from pathology with a distinct pulp chamber. The advantages of using panoramic X-ray photographs are: 1) Cutting the teeth is not necessary; 2) Panoramic X-ray is a very common dental-test, so it could be examined in a short time; 3) All the mandibular and the maxillary teeth are on one film; 4) Gross lesions (fractures, unerupted teeth) are readily visible. 5) Vertical measurements had acceptable accuracy and reproducibility when a software-based calibrated measurement tool was used [36]. Panoramic X-ray shows a lack of detail in comparison with the intraoral radiography, especially for the anterior teeth, and the projection can only be taken at one angle. For these reasons, the posterior teeth where the pulp chamber is normally fully visible were only chosen, disregarding all the pathological specimens [21,24]. The exposure parameters were set according to the patient's age and size. The patient's identification number, sex, age and date of radiographic taking were recorded. The exclusion criteria were: subjects with any developmental, endocrine or nutritional disorder and special dental diseases. Also panoramic radiographs showing impacted teeth, teeth with root canal treatment, crown restorations, broken teeth, teeth with large areas of enamel overlap between neighboring teeth, missing one of the studied teeth or unclear radiographs were excluded.

The study included 845 mandibular premolars (394 from males and 451 from females) and 835 mandibular molars (393 from males and 442 from females) of both sides (with exclusion of wisdom teeth) because they were more visible than maxillary teeth as suggested by Drusini *et al.* [24]. Protocol of the study was approved by Ethical Committee of Faculty of Medicine, Mansoura University.

Measurements

On all photographs with a fully visible pulp cavity two measurements were taken (Figures 1, 2). Height of the crown (CH) and height of the coronal pulp cavity (CPCH). Then tooth – coronal index (TCI) for each tooth was calculated as follows: $TCI = CPCH \times 100 / CH$. The use of an index instead of absolute measurement excludes possible errors resulting from different scales of X - ray photos (Drusini [21,24]). All measurements were taken using image processing software (ImageJ) to the nearest 0.01 mm. To ensure the accuracy of the technique used for measuring TCI a detailed reference points used: Cervical line that connect two landmarks to be measured; the mesial and distal cemento-enamel junction points; and divides the tooth into crown and root. Crown height is the maximum perpendicular distance from the cervical line to the tip of the highest cusp of teeth. While pulp height is the distance from cervical line to the coronal tip of the pulp chamber. All measurements were carried out twice by two observers and the mean was recorded to minimize intra and inter - observer errors.

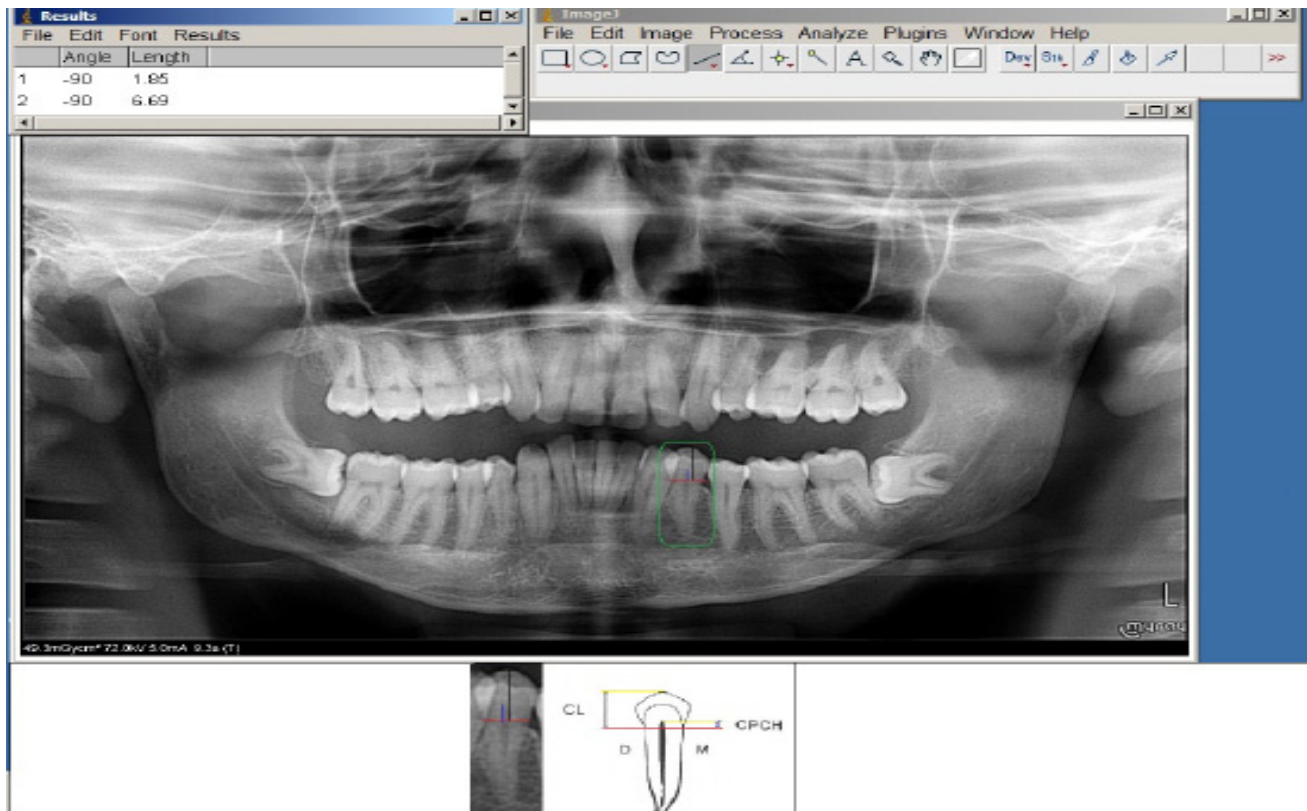


Figure 1: Premolar panoramic X - ray shows the measurements of TCI. The transverse line (red) represents the cemento-enamel junction between crown and root. The black line represents crown height (CH) and blue line represents coronal pulp cavity height (CPCH). D = distal side and M = mesial side

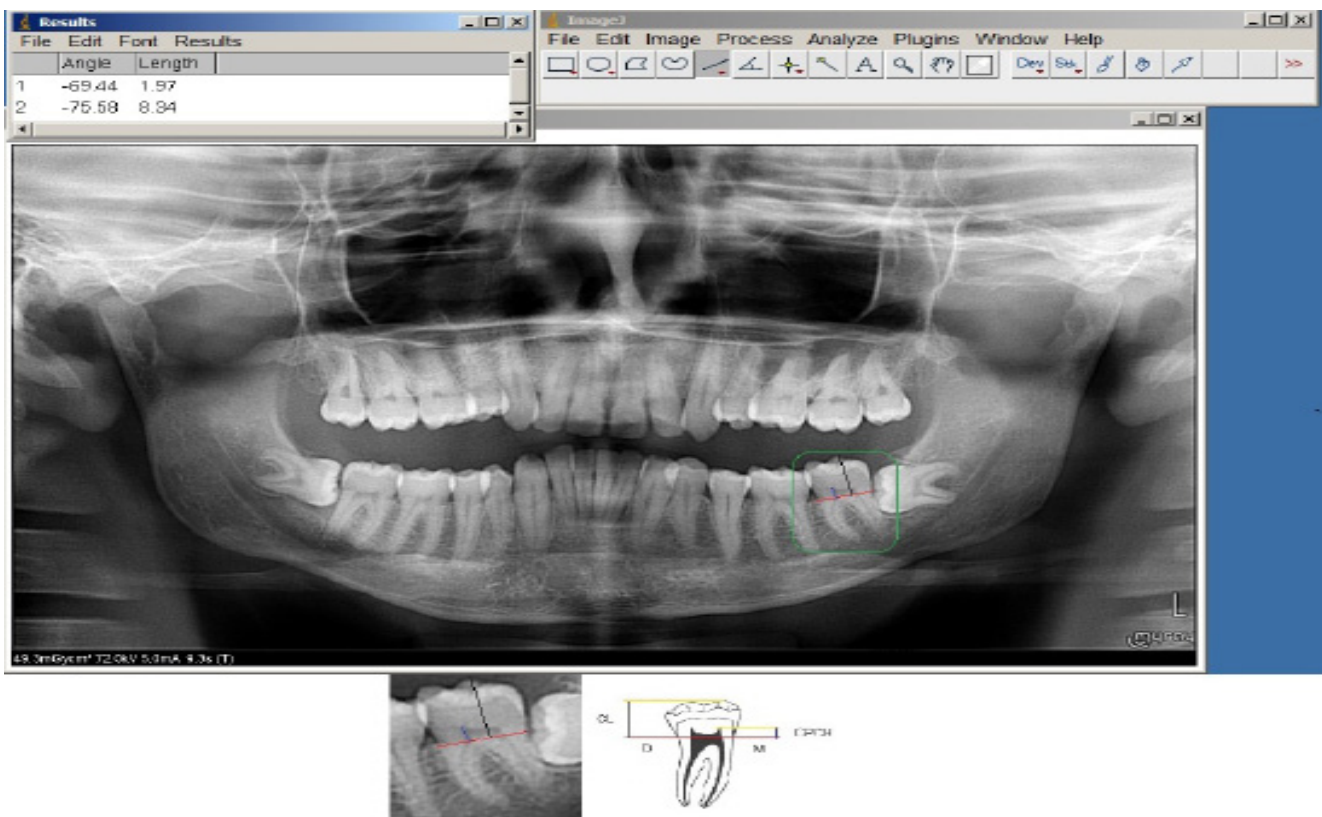


Figure 2: Molar panoramic X -- ray shows the measurements of TCI. The transverse line (red) represents the cemento-enamel junction between crown and root. The black line represents crown height (CH) and blue line represents coronal pulp cavity height (CPCH). D = distal side and M = mesial side

Statistical Analysis

The statistical analysis of data done by using excel program for figures and SPSS (SPSS, Inc, Chicago, IL) program statistical package for social science version 17. The description of the data done is in the form of mean (+/-) SE for quantitative data; frequency & proportion for qualitative data.

The analysis of the data was done to test statistical significant difference between groups. For quantitative data, student t-test was used to compare between two groups. Repeated measure ANOVA to compare same group in different times followed by post Hoc test for intra-time comparison. Pearson correlation was done to detect the association between two continues variables. Linear logistic regression was done to predict unknown variable (age) by using teeth measurements significant in univariate analysis. Inter and intra - observer agreements were determined using non-parametric -t- test.

N.B: p is significant if ≤ 0.05 at confidence interval 95%.

Results

The paired t-test to evaluate potential observer error revealed no statistically significant intra- and inter-observer differences between the paired sets of measurements carried out on the re-examined panoramic radiographs ($p > 0.05$).

Descriptive analysis of the studied subjects by means of age ($n = 234$) are summarized in Table 1. The mean \pm SE age of the studied subjects is 25.52 ± 0.84 years (ranges from 8 to 74 years). Males represent 50.9% with mean \pm SE age of 28.43 ± 1.27 years; while females represent 49.1% with mean \pm SE age of 22.49 ± 11.04 years.

Gender	Mean \pm SE	Min	Max	T	p
Males (n = 119) (50.9%)	28.43 ± 1.27	8.4	74	3.61	<0.001***
Females (n = 115) (49.1%)	22.49 ± 11.04	8	55		
Total (n = 234) (100%)	25.51 ± 0.84	8	74		

SE = Standard error; Min = minimum; Max = maximum; $p < 0.05$ is considered significant

Table 1: Descriptive Statistics of the Studied Subjects by Means of Age ($n = 234$)

Comparison of tooth – coronal index (TCI) of the right and left teeth between both sexes are demonstrated in Table 2. There is no significant difference between sex and TCI. Also the mean of TCI for premolars is larger than those of molars and it is higher in males than females (27.24 ± 0.077 to 28.51 ± 0.755 in females; 27.26 ± 0.748 to 28.66 ± 0.846 in males); and (24.79 ± 0.763 to 28.44 ± 0.680 in females; 24.81 ± 0.835 to 29.45 ± 0.866 in males) respectively.

Gender Tooth (TCI)	N	Mean \pm SE	t	p
Right 1st premolar (4 th) Male Female	103 112	28.22 ± 0.802 28.51 ± 0.755	0.262-	0.793
Left 1st premolar (4 th) Male Female	96 112	27.26 ± 0.748 28.92 ± 0.811	-1.494-	0.137
Right 2nd premolar (5 th) Male Female	99 115	28.66 ± 0.846 28.23 ± 0.748	0.376	0.707
Left 2nd premolar (5 th) Male Female	96 112	28.57 ± 0.802 27.24 ± 0.777	1.185	0.237
Right 1st molar (6 th) Male Female	91 109	28.08 ± 0.786 27.64 ± 0.716	0.417	0.677
Left 1st molar (6 th) Male Female	100 107	29.45 ± 0.866 28.44 ± 0.680	0.926	0.356
Right 2nd molar (7 th) Male Female	96 113	24.81 ± 0.835 24.79 ± 0.763	0.016	0.987
Left 2nd molar (7 th) Male Female	106 113	25.83 ± 0.780 25.40 ± 0.715	0.408	0.683

SE = Standard error; TCI = tooth coronal index; t = student t – test; $p < 0.05$ is considered significant

Table 2: Comparison of Tooth - Coronal Index (TCI) of the Right and Left Teeth Between both sexes ($n = 234$)

The correlation between tooth – coronal index (TCI) of the right and the left teeth and age in all studied subjects (n = 234) is represented in Table 3. There is positive correlation between TCI and age. The correlation is more in females than males (0.051 – 0.261; 0.069 – 0.223 for premolars & 0.079 – 0.245; 0.136 – 0.170 for molars) respectively. The 2nd right premolar TCI has a higher significant correlation with age in all studied subjects (p ≤ 0.05).

Teeth (TCI)	Combined group		Males		Females	
	R	P	R	P	R	P
Right 1 st premolar (4 th)	0.107	0.118	0.082	0.408	0.154	0.106
Left 1 st premolar (4 th)	-0.034	0.623	-0.069	0.506	0.051	0.594
Right 2 nd premolar (5 th)	0.241	< 0.001***	0.223	0.027*	0.261	0.005**
Left 2 nd premolar (5 th)	0.085	0.221	-0.102	0.322	0.237	0.012*
Right 1 st molar (6 th)	0.157	0.026*	0.138	0.191	0.172	0.073
Left 1 st molar (6 th)	0.197	0.005**	0.146	0.147	0.245	0.011*
Right 2 nd molar (7 th)	0.119	0.087	0.136	0.186	0.108	0.253
Left 2 nd molar (7 th)	0.13	0.054	0.17	0.081	0.079	0.403

SE = Standard error; TCI = tooth coronal index; r = correlation coefficient; p < 0.05 is considered significant.

Table 3: Correlation between tooth-coronal index (TCI) of Right and Left Teeth and Age in all Studied Subjects (n = 234)

Multivariate logistic regression analysis with the use of most significant tooth – coronal index to determine age is demonstrated in Table 4.

Group	Variable	B	SE	Beta	T	Significance	95 % Confidence Interval for B	
							Lower Bound	Upper Bound
Combined group	Constant	10.940	2.947		3.712	0.000	5.124	16.755
	TCI of right 2 nd premolar (5 th)	0.445	0.098	0.323	4.533	0.000	0.251	0.639
Males	Constant	18.545	4.371		4.243	0.000	9.870	27.220
	TCI of right 2 nd premolar (5 th)	0.329	0.146	0.223	2.250	0.027	0.039	0.620
Females	Constant	9.195	4.246		2.165	0.033	0.773	17.617
	TCI of right 2 nd premolar (5 th)	0.454	0.143	0.299	3.177	0.002	0.171	0.738

SE = standard error; p = significance; Exp = exponential

Table 4: Multivariate Logistic Regression Analysis with the Use of Significant Tooth - Coronal Index (TCI) to Predict Age

So for determination of age (Y), the following equations are used in combined group; males and females respectively.

Age (Combined group) = 10.940 + 0.445 X combined sample.

Age (Male) = 18.545 + 0.329 X males.

Age (Female) = 9.195 + 0.454 X females.

X is the TCI of 2nd right premolar tooth.

Discussion

Assessment of the pulp/tooth index is an indirect quantification of secondary dentin deposition³⁷. The aim of this study is to assess the accuracy of age estimation from the tooth – coronal index (TCI) of mandibular premolars and molars (except wisdom teeth) of both sides using panoramic radiographs and to develop regression equations that can be used in the Egyptians.

The present results revealed that there is no sex difference in TCI. This is in agreement with studies done *in Italy* by Drusini *et al.* [24]; Drusini [21]; Zadinska *et al.* [38]; *in India* by Shrestha [9]; *in Egypt* by Khattab *et al.* [39] and *in Western Australia* by Karkhanis *et al.* [40]. They stated that sex of individual appears to have no significant influence on age estimation, so that sex specific formulae are not necessary for age estimation in specimens of unknown sex. On the other hand this result is on contrary to that of Agematsu *et al.* [41] *in Japan*; Igbigbi and Nyirenda [42] *in Malawi*; who mentioned that gender has a significant influence on age estimation using TCI and hence there is need for sex – specific formulae in the sampled population. They explained this difference by the influence of estrogen on the formation of secondary dentin. Hietala *et al.* [43] and Silvana *et al.* [44] reported the existence of an estrogen receptor in odontoblast of human pulp tissues. In addition, Yokose *et al.* [45] reported that estrogen deficiency promotes the substrate synthesis of odontoblast. These reports suggest that estrogen exerts a strong influence on formation of secondary dentin.

Moreover; the current work revealed that the mean TCI of premolars is larger than those of molars and it is higher in males than females (27.24 ± 0.077 to 28.51 ± 0.755 in females; 27.26 ± 0.748 to 28.66 ± 0.846 in males); and (24.79 ± 0.763 to 28.44 ± 0.680 in females; 24.81 ± 0.835 to 29.45 ± 0.866 in males) respectively. This difference is considered to be due to the fact that the mandibular molars have morphological diversity than premolars. So the difference in decrease in pulp chamber volume in different age groups was not clear in molars as in premolars. Also may be because of mandibular premolar teeth are more visible than molars in radiographs. In addition to the overall size of the pulp cavity and lower resolution of the panoramic radiography for molars where the pulp cavity upper limits are sometimes less visible (Drusini [21]). These findings are consistent with that of Igbigbi and Nyirenda [42] in Malawi whom mentioned that the TCI for molars were lower than those of premolars.

Furthermore; to the best of our knowledge, this is the only work that studied the effect of side (either right or left teeth) on TCI. There is significant difference between right and left teeth as regard TCI. This may be due to developmental or morphological changes or the accuracy of radiographs. This finding was in contradiction with other studies done in Italy by Drusini [21], Drusini et al. [24]; Zadzińska et al. [38]; in Malawi by Igbigbi and Nyirenda [42]; in India by Saxena [35]; Chandramala et al. [37]; Bagh et al. [46]; in Egypt by Khatatb et al. [38]; Afify et al. [47]; in Western Australia by Karkhanis et al. [40] and in Belgium by Thevissen and Willems [48] which demonstrated that difference between teeth side is negligible in radiographic age estimation and they chose the side where the pulp chamber was more visible. Kvaal et al. [34] applied his study on left side and if due to tooth positioning, tilting or overlapping, insufficient tooth information was available, the corresponding tooth of right side was measured.

Furthermore, there is positive correlation between TCI in the present work and age and the correlation is more in females than males i.e. the index increases with increasing age ($0.051 - 0.261$; $0.069 - 0.223$ for premolars & $0.079 - 0.245$; $0.136 - 0.170$ for molars) respectively. This is similar to Shrestha's study [9] in India which mentioned that TCI was significantly increased with increased age. While Drusini [21]; Drusini et al. [24]; Zadzińska et al. [38] in Italy; Igbigbi and Nyirenda [42] in Malawi and Karkhanis et al. [40] in Western Australia reported that there were negative correlation between TCI and age. This could be explained by relatively young age of the present work samples as the age ranged from 8 – 74 years with mean age of 25.51 ± 0.84 years; so the decrease in pulp cavity due to dentin deposition is not evident. It is more in females than males may be due to hormonal changes.

Moreover, the current results stated that 2nd right premolar tooth is the most significant in the studied groups ($p \leq 0.05$). This is inconsistent with studies done in Italy by Drusini [21]; Drusini et al. [24] who mentioned that there was no significant differences between either 1st and 2nd premolars or 1st and 2nd molars and there was a strong correlation for molars than premolars in males. Also Zadzińska et al. [38] in Italy proved that male premolars had the highest correlation with age. While it is similar to that of Afify et al. [47] in Egypt which revealed that 2nd premolar was the most closely correlated with the age. Also Igbigbi and Nyirenda [42] in Malawi postulated that correlation was higher for premolar than molar teeth. This may be an expression of the overall size of the pulp cavity. In addition; Agematsu et al. [41] in Japan declared that females showed a stronger correlation between volume ratio of the pulp chamber and age for central incisor and 2nd premolar. Also Chandramala et al. [37] in India proved that upper 2nd premolar had highest correlation followed by lower 1st premolar. In addition Karkhanis et al. [40] in Western Australia mentioned that 1st right premolar had the highest correlation.

The variations among individuals as well as across populations and between the sexes; could be attributed to socioeconomic status, cultural and racial differences, genetic differences, difference in behavior, environmental factors, diet and disease (Slaus et al. [49]).

Moreover, the differences between the present results and other studies could be explained by differences in studied populations, difference in sample size and teeth examined in each study.

Conclusion

From the present work it could be concluded that age estimation from TCI is a precise, non-invasive, not time consuming; not requires highly specialized equipment and applicable to both living and dead individuals. Also the result concluded that gender has no effect on TCI, and there was significant difference between the right and the left teeth so they should be taken into consideration. In addition, the 2nd right premolar TCI was the most significant in Egyptian males; females and combined group. The regression equations should be applied cautiously for different population and time periods.

Acknowledgment

We acknowledge further studies including wisdom teeth and including larger sample site and covering large geographical areas.

References

1. Ferenandes M, Pereira D, Braganca P, de Lima SH, Franceschini Junior L et al. (2011) Estimation by Measurements of Developing Teeth: Accuracy of Cameriere's Method on a Brazilian Sample. J Forensic Sci 56: 1616 – 9.
2. Rai B, Kaur J, Cingolani M, Ferrante L, Cameriere R (2010) Age Estimation in Children by Measurement of Open Apices in Teeth: An Indian Formula. Int J Legal Med 124: 237 – 41.
3. Cameriere R, Ferrante L, Belcastro MG, Bonfiglioli B, Rastelli E, et al. (2007) Age Estimation by Pulp / Tooth Ratio in Canines by Peri-Apical X - rays. J Forensic Sci 52: 166-70.

4. Sameda H, Saka H, Matsunaga, S, Ide Y, Nakahara K, et al. (2009) Age Estimation Based on Three-Dimensional Measurement of Mandibular Central Incisors in Japanese. *Forensic Sci Int* 185: 110 – 4.
5. Amandeep S, Gorea RK, Singla U (2004) Age Estimation from Physiological Changes of Teeth. *J Indian Forensic Sci* 26: 0971-3.
6. Joseph CC, Reddy BHS, Cherian NM, Kannan SK, George G, et al. (2013) Intraoral Dental Radiography for Adult Age Estimation: A Reliable Technique. *J Indian Academy Oral Medi Radiol* 25: 287 – 90.
7. Ohtani S, Yamamoto K (1991) Age Estimation Using the Racemization of Amino Acid in Human Dentin. *J Forensic Sci* 36: 792-800.
8. Takasaki T, Tsuji A, Ikeda N, Ohishi M (2003) Age Estimation in Dental Pulp DNA Based on Human Telomere Shortening. *Int J Legal Med* 117: 232-4.
9. Shrestha J (2014) Comparative Evaluation of Two Established Age Estimation Techniques (Two Histological and Radiological) by Image Analysis Software Using Single Tooth. *Forensic Res* 5: 1-6.
10. Zaher JF, Fawzy IA, Habib SR, Ali MM (2011) Age Estimation from Pulp / Tooth Area Ratio in Maxillary Incisors Among Egyptians Using Dental Radiographic Images. *J Forensic Leg Med* 18: 62-5.
11. Erbudak HO, Ozbek M, Uysal S, Karabulut E (2012) Application of Kvaal et al.'s Age Estimation Method to Panoramic Radiographs from Turkish Individuals. *Forensic Sci Int* 219: 141-6.
12. Lamendin H, Baccino E, Humbert JF, Tavernier JC, Nossintchouk RM, et al. (1992) A Simple Technique for Age Estimation in Adult Corpses: the Two Criteria Dental Method. *J Forensic Sci* 37: 1373-9.
13. Bang G, Ramm E (1970) Determination of Age in Humans from Root Dentin Transparency. *Acta Odontol Scand* 28: 3-35.
14. Condon K, Charles DK, Cheverud JM, Buikstra JE (1986) Cementum Annulation and Age Determination in Homo Sapiens. II. Estimates and Accuracy. *Am J Phys Anthropol* 71: 321-30.
15. Helfman PM, Bada JL (1976) Aspartic Acid Racemization in Dentin as a Measure of Ageing. *Nature* 262: 279-81.
16. Bashet M, Acharya AB, Naikmasur VG (2010) Age Estimation in Indians from Pulp / Tooth Area Ratio of Mandibular Canines. *Forensic Sci Int* 197: 125.
17. Cameriere R, De Luca S, Aleman I, Ferrante L, Cingolani M (2012) Age Estimation by Pulp / Tooth Ratio in Lower Premolars by Orthopantomography. *Forensic Sci Int* 214: 105-12.
18. Yuniarti A, Arifin AZ, Wijaya AY, Khotimah WN (2013) An Age Estimation Method to Panoramic Radiographs from Indonesian Individuals. *Telkomnika* 11: 199-206.
19. Manigandan SC, Sivagami AV (2014) Age Estimation with Dental Radiographs. *Res J Pharmaceutical, Biol Chem Sci* 5: 1370-6.
20. Drusini AG (1993) Age Estimation from Teeth Using Soft X-Ray Findings. *Anthrop Anz* 51: 41-6.
21. Drusini AG (2008) The Coronal Pulp Cavity Index: A Forensic Tool for Age Determination in Human Adults. *Cuad Med Forense* 14: 235-49.
22. Ayad CE, Hamid HM, Abdalla EA, Kajoak SA (2014): Estimation of Age for Sudanese Adults Using Orthopantomographs. *Glob J Med Res* 14: 7-14.
23. Sharma R, Srivastava A (2010) Radiographic Evaluation of Dental Age of Adults using Kvaal's Method. *J Forensic Dent Sci* 2: 22-6.
24. Drusini AG, Toso O, Ranzato C (1997) The Coronal Pulp Cavity Index: A biomarker for Age Determination in Human Adults. *Am J Phys Anthropol* 103: 353-63.
25. Schour I, Massler M (1941) The Development of the Human Dentition. *J Am Dent Assoc* 28:1153-60.
26. Demirjian A, Goldstein H, Tanner JM (1973) A New System of Dental Age Assessment. *Hum Biol* 45: 211– 27.
27. Ikeda N, Umetsu K, Kashimura S, Suzuki T, Oumi M (1985) Estimation of Age from Teeth with Their Soft X-Ray Findings. *JPN J For Med* 39: 244-50.
28. Gustafson G (1950) Age Determinations on Teeth. *J Am Dent Assoc* 41: 45-54.
29. Kilian J (1975) The Technique of Thin Sections of Teeth. *Czechoslovak Dentistry* 75: 24-8.
30. Kashyap VK, Koteswara NR (1990) A Modified Gustafson Method of Age Estimation from Teeth. *Forensic Sci Int* 47: 237-47.
31. Cameriere R, Ferrante L, Cingolani M (2004) Variations in Pulp/Tooth Area Ratio as an Indicator of Age: a Preliminary Study. *J Forensic Sci* 49: 317-9.
32. Cameriere R, Ferrante L, Cingolani M (2004) Precision and Reliability of Pulp/ Tooth Area Ratio (RA) of Second Molar as Indicator of Adult Age. *J Forensic Sci* 49: 1319-23.
33. Cameriere R, Brogi G, Ferrante L, Mirtella D, Vultaggio C, et al. (2006) Reliability in Age Determination by Pulp/Tooth Ratio in Upper Canines in Skeletal Remains. *J Forensic Sci* 51: 861-4.
34. Kvaal SI, Kolltveit KM, Thomsen IO, Solheim T (1995) Age Estimation of Adults from Dental Radiographs. *Forensic Sci Int* 74: 175-85.
35. Saxena S (2011) Age estimation of Indian Adults from Orthopantomographs. *Braz Oral Res* 25: 225-9.
36. Chandramala R, Sharma R, Khan M, Srivastava A (2012) Application of Kvaal's Technique of Age Estimation on Digital Panoramic Radiographs. *Dentistry* 2:142 -7.
37. Vazquez L, Nizamaldin Y, Combescure C, Nedir R, Bischof M, et al. (2013) Accuracy of Vertical Height Measurements on Direct Digital Panoramic Radiographs Using Posterior Mandibular Implants and Metal Balls as Reference Objects. *Dentomaxillofac Radiol* 42: doi: 10.1259/dmfr.20110429.
38. Zadinska E, Drusini AG, Carrara N (2000) The Comparison Between Two Age Estimation Methods Based on Human Teeth. *Przegląd Antropologiczny – Anthropological Review* 63: 95-101.
39. Khattab NAF, Marzouk HM, AbdelWahab TM (2013) Application of Tooth Coronal Index for Age Estimation Among Adult Egyptians. *Schoolary Res* 15.
40. Karkhanis S, Mack P, Franklin D (2013) Age Estimation Standards for a Western Australian Population Using the Coronal Pulp Cavity Index. *Forensic Sci Int* 231: 412e1-6.
41. Agematsu H, Sameda H, Hashimoto M, Matsunaga S, Abe S, et al. (2010) Three Dimensional Observation of Decrease in Pulp Cavity Volume Using Micro – CT: Age Related Change. *Bull Tokyo Dent Coll* 51: 1-6.
42. Igbibi PS, Nyirenda SK (2005) Age Estimation of Malawian Adults from Dental Radiographs. *WAJM* 24: 329-33.
43. Heitala EL, Larmas M, Salo T (1998) Localization of Estrogen Receptor related antigen in human odontoblast. *J Dent Res* 77: 1384-7.
44. Silvana J, Goranka PM, Jasna TH, Ivana M, Sanja S, et al. (2003) Estrogen Receptors in Human Pulp Tissue. *Oral Surg Oral Med Oral Pathol* 95: 340-4.
45. Yokose S, Zhungfeng C, Tajima Y, Fujieda K, Katayama I, et al. (1998) The Effect of Estrogen Deficiency on Glycosylation of Odontoblasts in Rats. *J Endod* 24: 645 – 7.

46. Bagh T, Chatra L, Shenai P, Veena KM, Rao PK, et al. (2014) Age Estimation Using Cameriere Seven Teeth Method with Indian Specific Formula in South Indian Children. *Int J Advanced Health Sci* 1: 2-10.
47. Afify MM, Zayet MK, Mahmoud NF, Ragab AR (2014) Age Estimation from Pulp / Tooth Area Ratio in Three Mandibular Teeth by Panoramic Radiographs: Study of an Egyptian Sample. *Forensic Res* 5: 3.
48. Thevissen PW, Galiti D, Willems G (2012) Human Dental Age Estimation Combining Third Molar(s) Development and Tooth Morphological Age Predictors. *Int J Legal Med* 126: 883-7.
49. Slaus M, Strinovia D, Skaviae J, Petroveeki V (2003) Discriminate Function Sexing of Fragmentary and Complete Femora: Standards of Contemporary Croatia. *J Forensic Sci* 48: 509-12.

Submit your manuscript to Annex Publishers and benefit from:

- Convenient online submission
- Rigorous peer review
- Immediate publication on acceptance
- Open access: articles freely available online
- High visibility within the field
- Better discount for your subsequent articles

Submit your manuscript at
<http://www.annexpublishers.com/paper-submission.php>